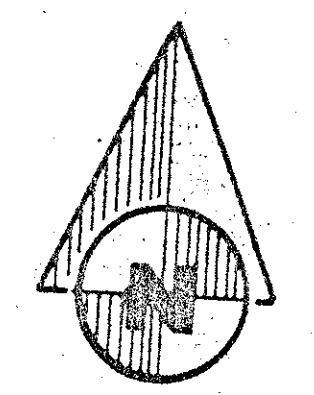


WEST LINE SEC. 13-44-40
 N. LINE LOT 12
 0.28'
 WEST 1/4 COR. SEC. 13-44-40



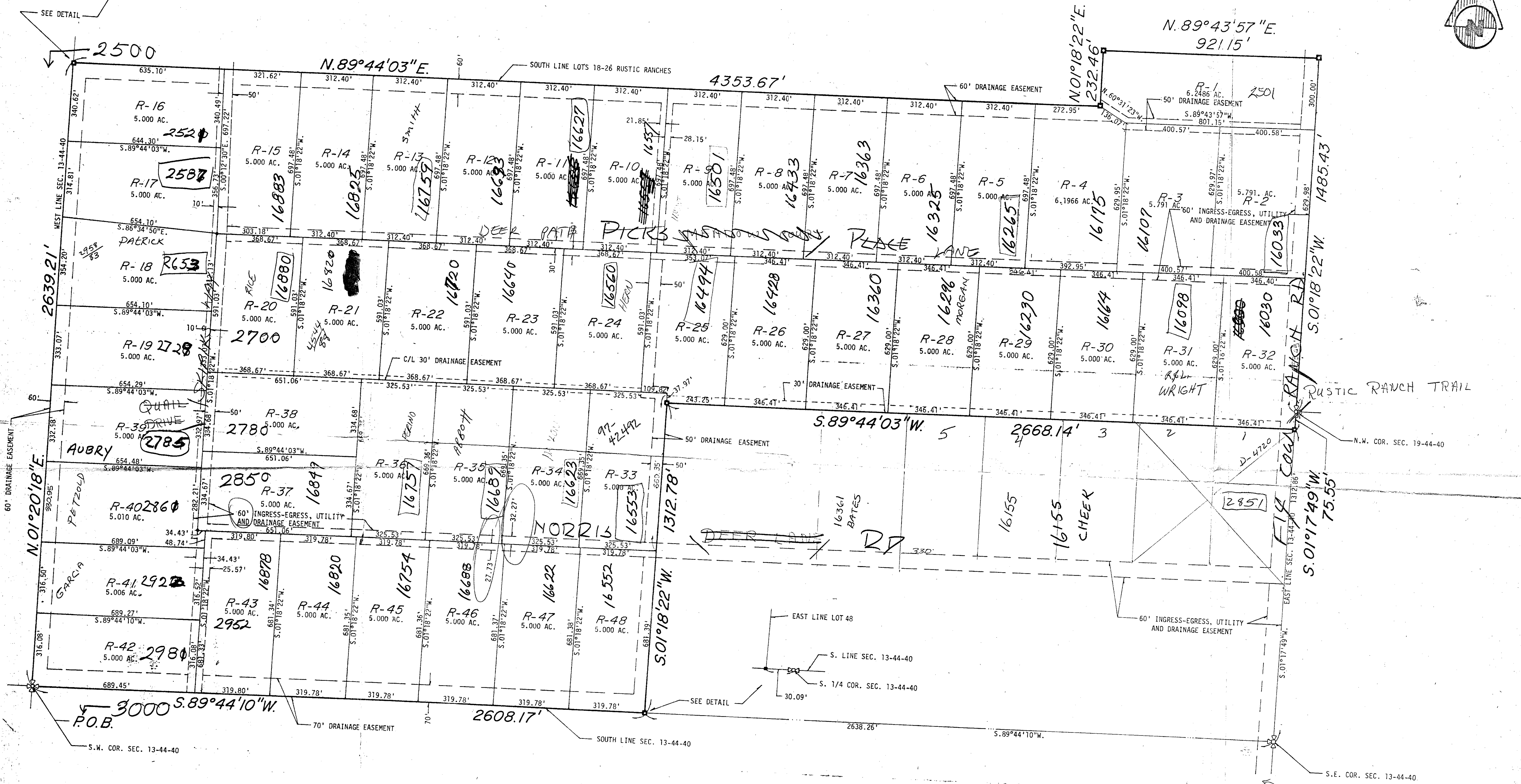
OWN	DATE
DKD	SCALE

BY	REVISIONS
DATE	

SCOPE:
 RUSTIC RANCHES PHASE II

FOR:

BENCH MARK
hand surveying and mapping, inc.
 2300 PALM BEACH BLVD., SUITE # 109 WEST PALM BEACH, FLORIDA 33409
 ZIP CODE 33409



LEGAL DESCRIPTION
 RUSTIC RANCHES PHASE II

A PARCEL OF LAND LYING IN SECTION 13, TOWNSHIP 44 SOUTH, RANGE 40 EAST, PALM BEACH COUNTY, FLORIDA, BEING MORE PARTICULARLY DESCRIBED AS FOLLOWS:

COMMENCING AT THE SOUTHWEST CORNER OF SAID SECTION 13, THENCE, RUN N. 01°20'18" E., ALONG THE WEST LINE OF SAID SECTION 13, A DISTANCE OF 2639.21 FEET; THENCE, N. 89°44'03" E., A DISTANCE OF 4353.67 FEET; THENCE, N. 01°18'22" E., PARALLEL WITH THE EAST LINE OF SAID SECTION 13, A DISTANCE OF 232.46 FEET; THENCE, N. 89°43'57" E., PARALLEL WITH THE NORTH LINE OF SAID SECTION 13, A DISTANCE OF 921.15 FEET TO A POINT IN THE EAST LINE OF SAID SECTION 13; THENCE, S. 01°18'22" W., ALONG THE EAST LINE OF SAID SECTION 13; THENCE, TO THE NORTHWEST CORNER OF SECTION 19, TOWNSHIP 44 SOUTH, RANGE 40 EAST; THENCE, S. 01°17'49" W., A DISTANCE OF 1485.43 FEET; THENCE, S. 89°44'03" W., CONTINUING ALONG SAID EAST LINE, A DISTANCE OF 73.54 FEET; THENCE, S. 89°44'03" W., A DISTANCE OF 2668.14 FEET; THENCE, S. 01°18'22" W., PARALLEL WITH THE EAST LINE OF SAID SECTION 13, A DISTANCE OF 1312.78 FEET TO A POINT IN THE SOUTH LINE OF SAID SECTION 13; THENCE, S. 89°44'10" W., ALONG SAID SOUTH LINE, A DISTANCE OF 2608.17 FEET TO THE POINT OF BEGINNING.

CONTAINING: 244.053 ACRES, MORE OR LESS.

SUBJECT TO EXISTING EASEMENTS, PRESERVATIONS, RESTRICTIONS, AND RIGHTS OF WAY OF RECORD.

- NOTES:
- ALL LOTS CONTAIN MORE THAN 217,800 SQUARE FEET.
 - ALL LOT LINES, WHERE EASEMENTS ARE NOT GRAPHICALLY DEPICTED, ARE THE CENTERLINE OF A 12-FOOT WIDE UTILITY EASEMENT.
 - ALL INGRESS AND EGRESS EASEMENTS SHOWN HEREON, ARE FOR ROAD PURPOSES AND FOR CONSTRUCTION AND MAINTENANCE OF UTILITIES AND DRAINAGE.

I HEREBY CERTIFY I HAVE SURVEYED THE PROPERTY DESCRIBED HEREON AND THAT THIS SKETCH OF SURVEY IS ACCURATE AND CORRECT TO THE BEST OF MY KNOWLEDGE AND BELIEF, THERE ARE NO APPARENT ABOVE GROUND ENCROACHMENTS OTHER THAN THOSE SHOWN OR STATED HEREON.

BY: _____ DATE: _____ "SEAL"

FLORIDA PROFESSIONAL LAND SURVEYOR NO. _____

3000-057

WD. NO.	4000
SHEET	